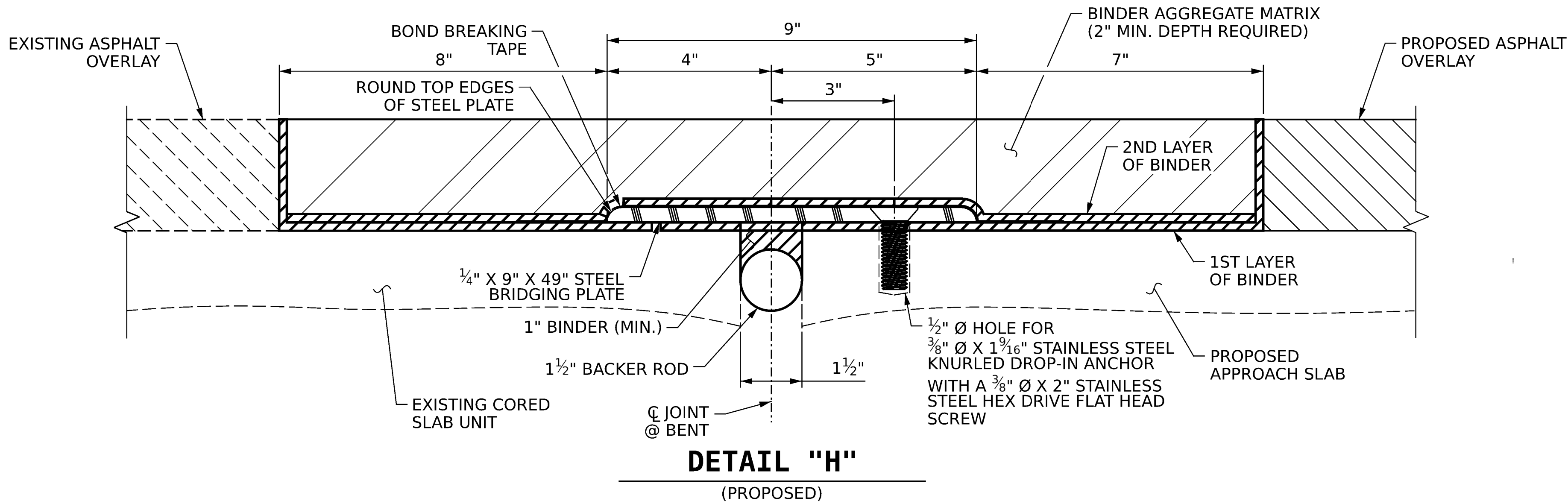


8/26/21



AS-BUILT SUMMARY OF QUANTITIES	
LOCATION	ASPHALT PLUG JOINT FOR PRESERVATION (LIN. FT.)
APPROACH SLAB @ END BENT 2	33.0

**NOTES :**

THE CONTRACTOR SHALL FIELD VERIFY THE EXISTING JOINT OPENING PRIOR TO ORDERING JOINT MATERIALS.

THE MANUFACTURER IS TO PROVIDE THE NOMINAL UNCOMPRESSED SEAL WIDTH OF THE BACKER ROD FOR THE EXISTING JOINT SIZE AND ACCOMODATE THE MINIMUM EXPANSION SHOWN ON THE PLANS.

ONLY ASPHALTIC PLUG JOINTS THAT ARE APPROVED ON NCDOT'S APPROVED PRODUCTS LIST SHALL BE USED. CONTACT SMU PRESERVATION AND REPAIR AT LEAST 3 DAYS PRIOR TO JOINT INSTALLATION.

ASPHALTIC PLUG JOINTS SHALL BE INSTALLED AS PER THE MANUFACTURER'S RECOMMENDATIONS.

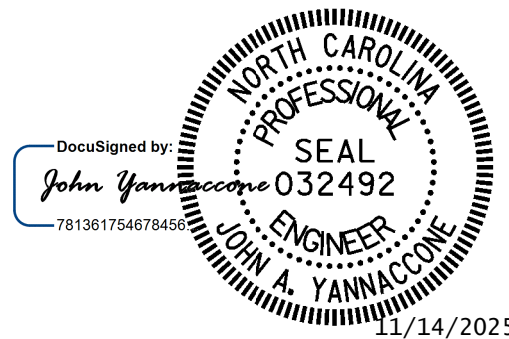
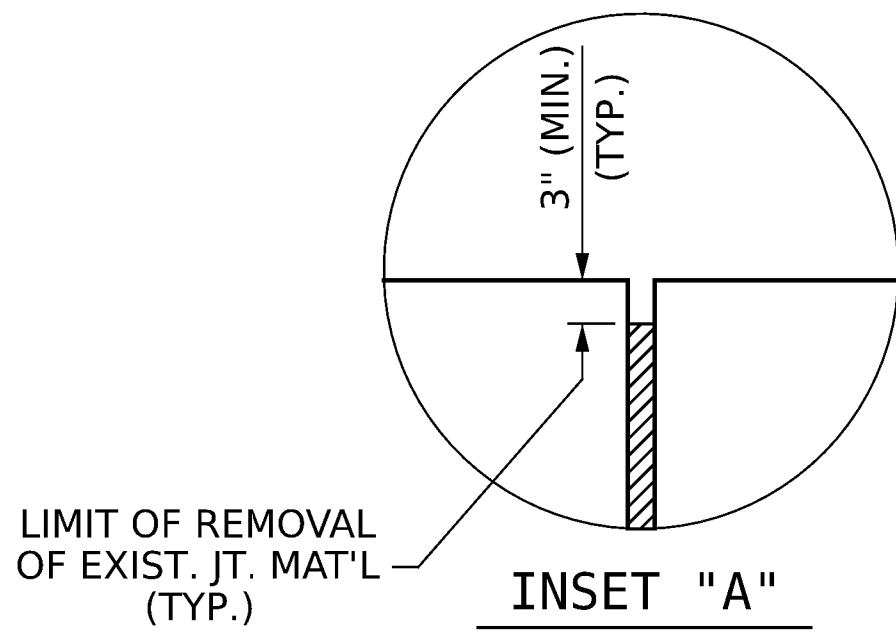
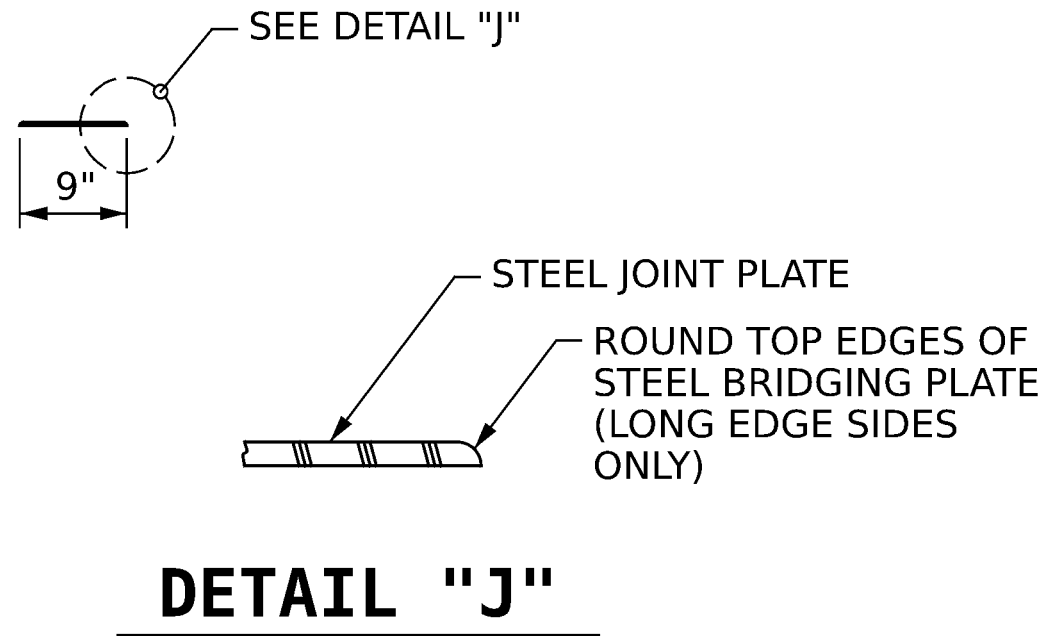
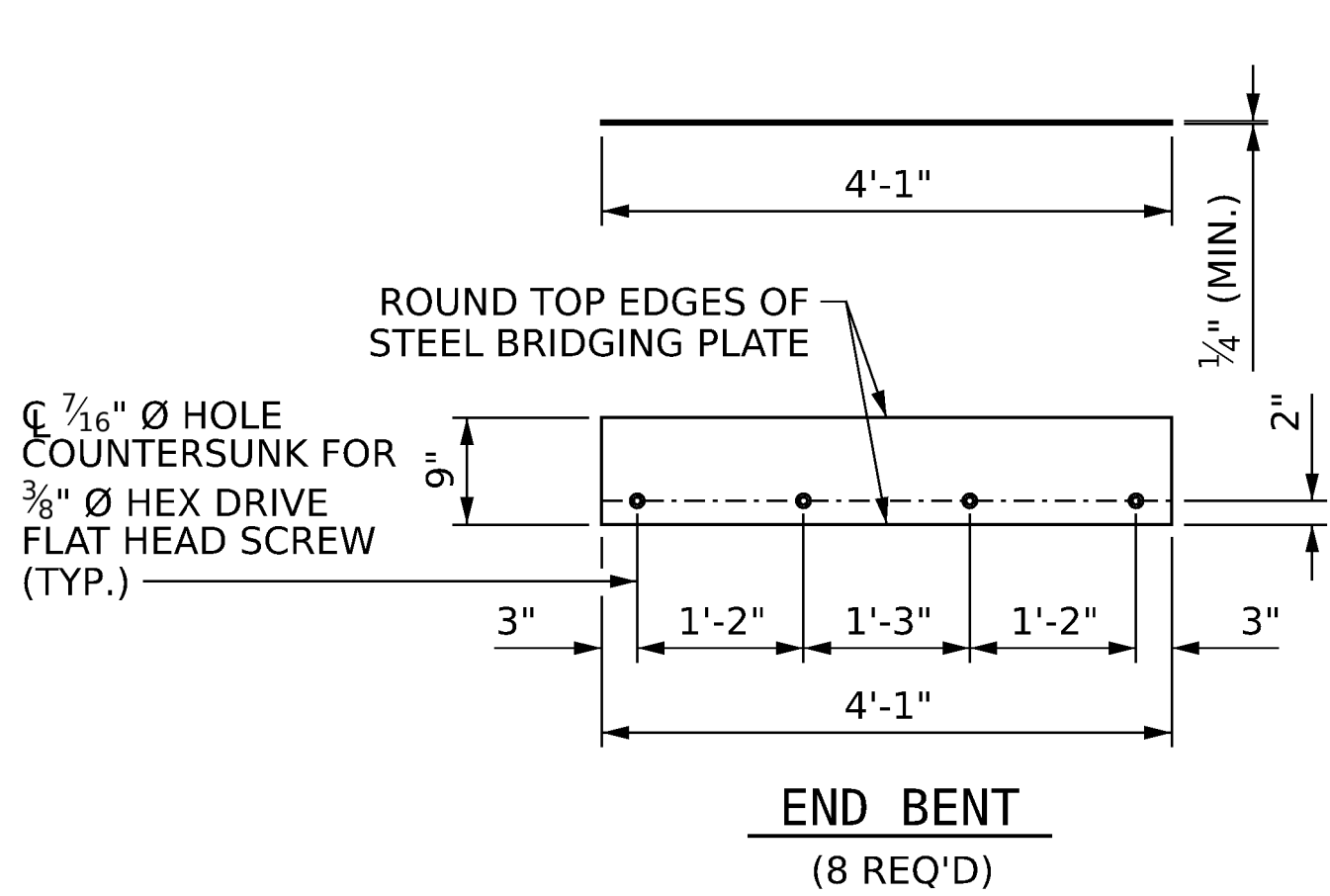
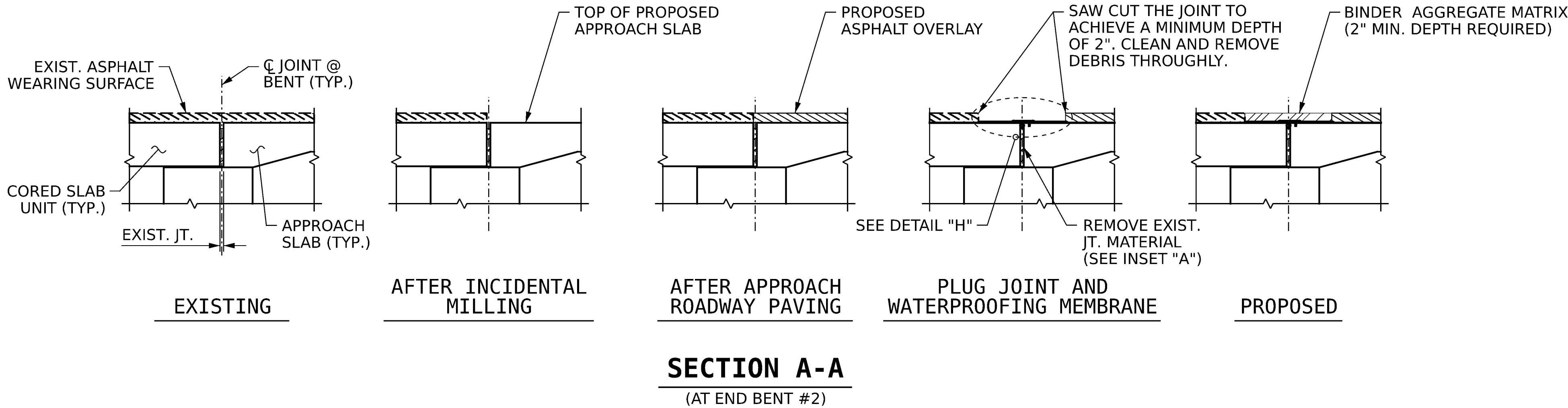
A MANUFACTURER'S CERTIFIED TRAINED REPRESENTATIVE SHALL BE PRESENT DURING THE INSTALLATION OF THE JOINT.

THE CONTRACTOR SHALL TAKE CARE DURING JOINT REHAB OPERATIONS NOT TO ALLOW ANY MATERIAL TO FALL BELOW THE BRIDGE. ANY MATERIAL THAT FALLS BELOW THE BRIDGE SHALL BE CONTAINED, REMOVED AND DISPOSED OF BY THE CONTRACTOR AT NO EXTRA COST TO THE DEPARTMENT. IF THE ENGINEER DETERMINES THAT THE PROTECTIVE DEVICES ARE NOT ADEQUATE OR NOT BEING EMPLOYED, THE WORK SHALL BE SUSPENDED UNTIL ADEQUATE PROTECTION IS PROVIDED.

THE STEEL BRIDGE PLATE SHALL BE A MINIMUM OF 36 KSI STEEL. THE STEEL BRIDGE PLATE THICKNESS SHALL BE A MINIMUM OF 1/4".

FOR ASPHALT PLUG JOINTS FOR PRESERVATION, SEE SPECIAL PROVISIONS.

FOLLOW MANUFACTURER'S RECOMMENDATIONS FOR DROP-IN ANCHOR AND BOLT INSTALLATION.



PROJECT NO. **18314.1044067**  
**HAYWOOD** COUNTY  
BRIDGE: **430163**

SHEET 5 OF 5

STATE OF NORTH CAROLINA  
DEPARTMENT OF TRANSPORTATION  
RALEIGH

**ASPHALT PLUG JOINT DETAILS**

DRAWN BY : **J. HARRIS** DATE : **4/2025**  
CHECKED BY : **J. YANNACCONE** DATE : **4/2025**



One Glenwood Avenue  
Suite 900  
Raleigh, NC 27603  
919-420-7660  
NC Lic. No. F-0270

DOCUMENT NOT CONSIDERED  
FINAL UNLESS ALL  
SIGNATURES COMPLETED

REVISIONS				SHEET NO.	
NO.	BY:	DATE:	NO.	BY:	DATE:
1			3		
2			4		
				S-11	TOTAL SHEETS 14